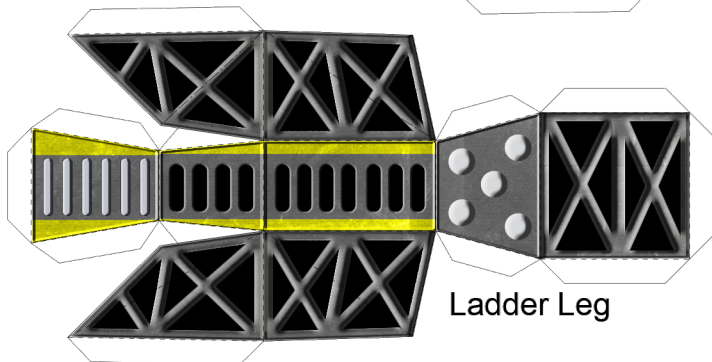
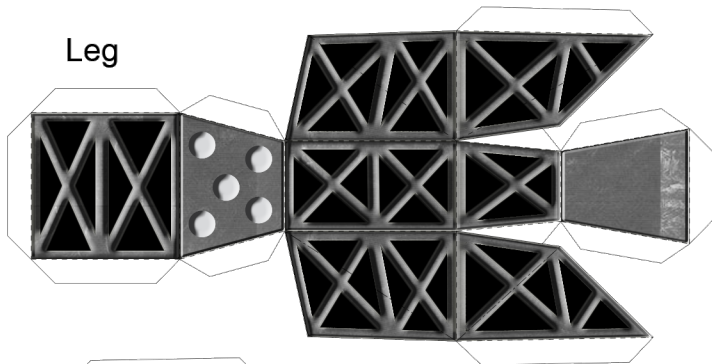


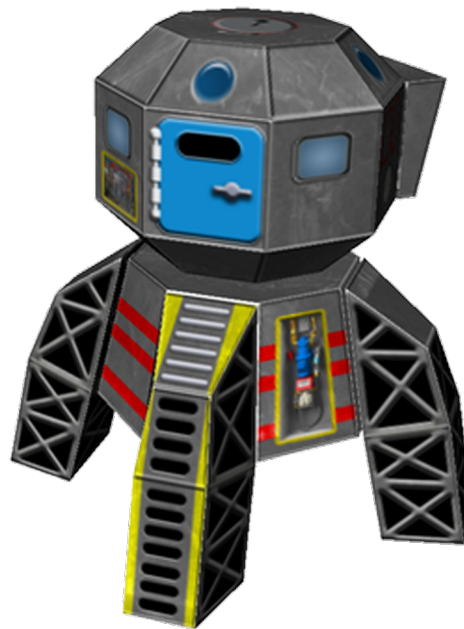
Cardboard Warriors

The paper miniatures wargaming forum

Leg



Ladder Leg



1. When assembling, start with the pink tabs.

2. Cut out all the parts, score, and fold.

3. Assemble the four legs first. Glue the pink tab, then fold the sides over and glue.

4. Next assemble the engine module. Glue the pink tab, then fold the top and bottom over and glue.

5. Fold the upper cockpit sides inward and glue, then glue the top.

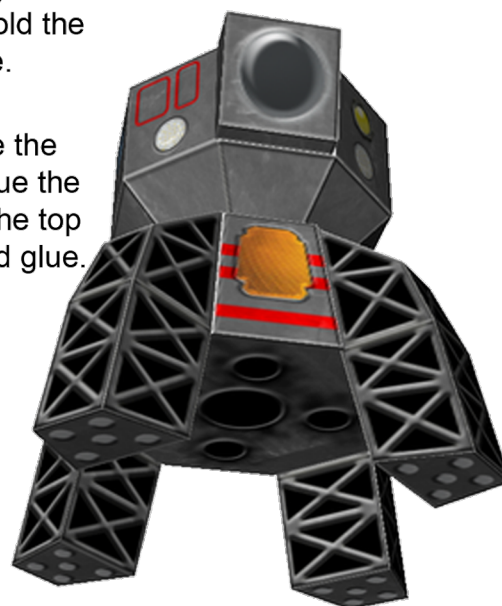
6. Fold the lower cockpit sides inward and glue, then glue the bottom.

7. Fold the sides of the pilot window and glue. Glue pilot window to cockpit.

8. Glue legs to the engine module.

9. Glue cockpit to engine module being careful to align the hatch with the ladder leg.

DESIGNED BY
GLENN
WILLIAMS



LUNAR LANDER

↓ Feed this end into machine cutter ↓

Printing: turn scaling OFF, have centering ON, set to GOOD or BEST setting, Use Matte Photo paper for best results.